

# Ca-Pb (Calcium-Lead)

H. Okamoto

The Ca-Pb phase diagram in [Massalski2] was redrawn from [1992Itk] (dashed lines in Fig. 1). From essentially the same phase boundary data, [2004Car] calculated the Ca-Pb phase diagram (solid lines in Fig. 1). Both [1992Itk] and [2004Car] diagrams represent experimental data well. Because the  $\text{CaPb}_3$  liquidus in [1992Itk] was too asymmetric according to the criterion given by [1993Oka], the diagram of [2004Car] may be a better presentation of this system. Figure 2 shows the Pb-rich corner of the Ca-Pb phase diagram calculated by [2004Car].

## References

- 1992Itk:** V.P. Itkin and C.B. Alcock, The Ca-Pb (Calcium-Lead) System, *J. Phase Equilibria*, Vol 13 (No. 2), 1992, p 162-169
- 1993Oka:** H. Okamoto and T.B. Massalski, Guidelines for Binary Phase Diagram Assessment, *J. Phase Equilibria*, Vol 14 (No. 3), 1993, p 316-335
- 2004Car:** Y. Cartigny, J.M. Fiorani, A. Maître, and M. Vilasi, Thermodynamic Assessment of the Ca-Pb System, *Thermochim. Acta*, Vol 414 (No. 2), 2004, p 197-202

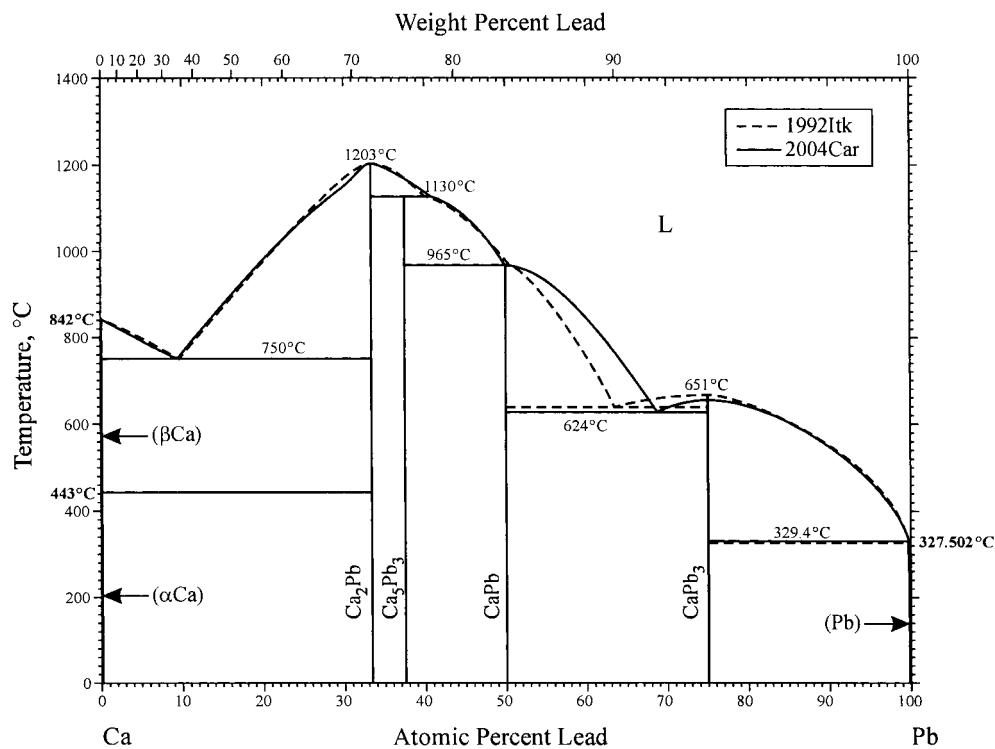


Fig. 1 Ca-Pb phase diagram

Section III: Supplemental Literature Review

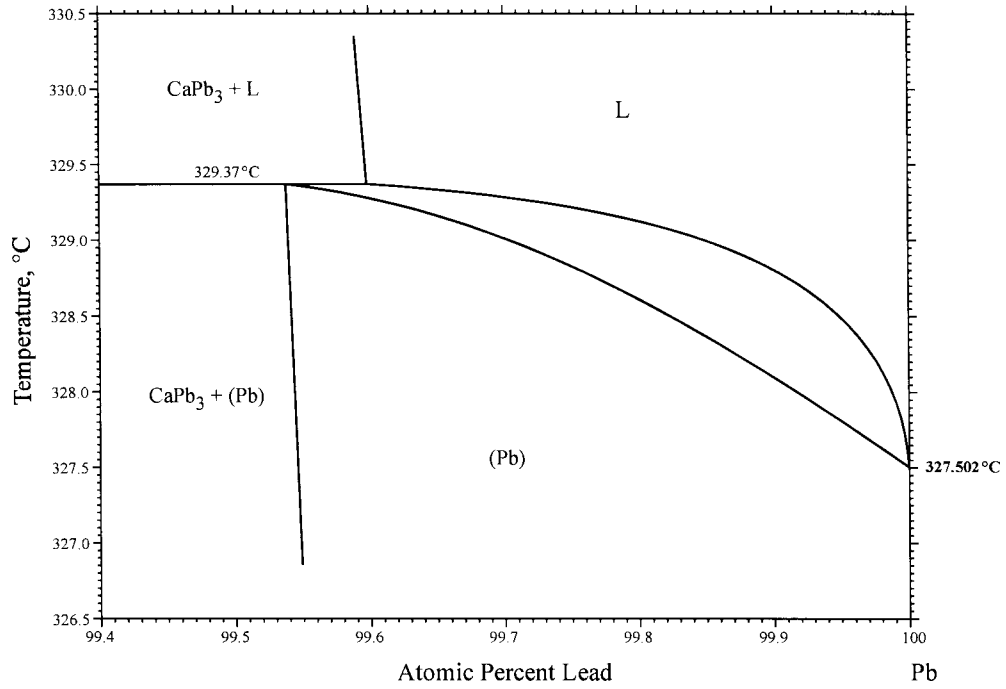


Fig. 2 Pb-rich corner of the Ca-Pb phase diagram [2004Car]